



The IWWF World Water Ski Show Championships. March 21st, 22nd and 23rd, Mulwala Australia. Bulletin Two.

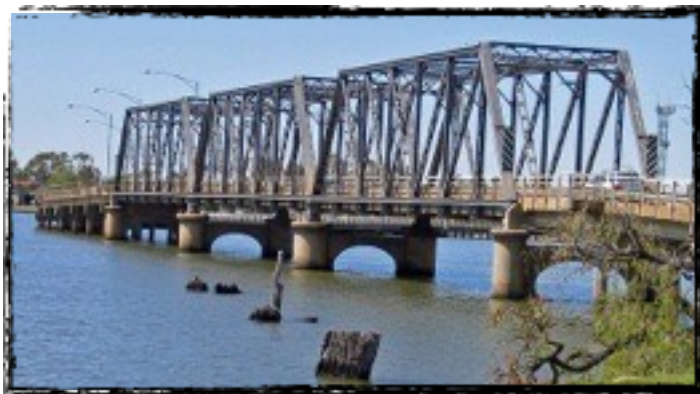
The Mulwala Waterski club invite you to be a part of the 2025 IWWF World Water Ski Show Championships!

The Mulwala Water-ski Club is the largest water-ski club in the world, a fully licensed club complete with two restaurants, Coffee Shop, a holiday park, ample bar and a huge club house and free parking!



Mulwala and Yarrawonga Townships:

Along the mighty Murray River sits two sister city's, Yarrawonga and Mulwala. The cities share a rich history and even though they are only separated by a bridge, they sit in different states, Mulwala on the New South Wales side and Yarrawonga on the Victorian.



The towns share many great amenities including two separate golf clubs, an Olympic size swimming pool, Great local shopping, bars, clubs and restaurants. The Murray River that separates the two towns was dammed some 80 years ago and provides an inland oasis that tourists flock to over the summer for all manner of boating activities. For more information head to www.yarrawongamulwala.com.au





Weather

The weather in Mulwala during March can vary, but it is one of the least windy times of the year, expect temperatures to be between 20 and 25 degrees celsius during the day time. Nights can be cooler but being that we are still in March we would expect it to still be warm. The water temperature at night may make you want a jumper (Sweatshirt - Hoody - Something warmer than a T-Shirt.)

Getting Here

Travel to the township is fairly easy as Mulwala and Yarrawonga are located just off the Hume Highway, one of the main driving routes between Sydney and Melbourne.

The closest airport is the regional airport of Albury, approximately an hours drive from Mulwala. The airport has hire car facilities and is small and easy to navigate.

Melbourne Tullamarine Airport is approximately three hours drive from Mulwala and is shown on the map below, It is the the closest international airport to fly to if you intend to drive to Mulwala.

Sydney is a 6 hour drive form Mulwala, just head straight down the Hume HWY and take a right at Albury.

Transport will be provided to teams flying into and out of Melbourne Airport and Officials out of Albury or coordinated with the LOC through teams arriving in Melbourne.

The Site

The Max Kirwan Ski Parks are two man made lakes on Mulwalas outskirts. Built in the nineties, the parks have hosted three different World Titles and many National and State Championships across all waterskiing divisions including the 2017 and 2023 Australian Show Ski Championships. The lakes are 850 meters (2800ft) long and 100 meters (330ft) wide. There are docks all over the lakes for starting and a jump in both lakes for practice. The site is a five minute drive from town. Ample parking is available on site for teams and officials for free as well as for spectators a small fee however camping on site isn't allowed. The Caravan Park at the Ski Club can cater for campers, RVs and cabins.

The Site has multiple offices for judging including large rooms that can accomodate meetings. Toilets and showers are on site and more will be bought in for competition. Grandstands for the crowd are on site and viewing of the site is spectacular with a full view of the show course available for all spectators.





The Show Course

The Show Course is tried and tested now over many show ski competitions with the most teams having spent time on it before, during training for the 2020 IWWF World Water Ski Show Championships.

At the previous National Championships in 2023, the biggest ballet line of 24 skiers was able to turn in a circle, 8 person back barefoot and 11 person front barefoot made it into course with room to spare. back breakers, barefoot circles all had no issues and a double top four high was able to be built before entering the judges' area. On one hand, the course is more compact but on the other. It will always be smooth and backwash disappears, it's still big enough and creates exciting challenges for the teams and makes the spectatorship of the event rise to a new level.



Boats



The Mulwala Waterski Club has a long running relationship with Malibu Boats, and for 2025 IWWF World Water Ski Show Championships we will supply four Malibu Response TXi's. Three will be equipped with a TXi Tower and come with a wedge and a 410hp engine. The fourth will be a 410hp engine with out a tower or wedge. All boats have a 13X13 propeller and a Highline can be requested through your team manager.

Mulwala has two twin rigs available for the competition and show teams can choose between either one. The Mulwala team's Dynaski, with two 200hp Evinrude engines, will be available as a tournament boat. There will also be a brand new legacy hull with two 300 Mercurys Pro XS on the back that we consider the primary tournament boat. We are yet to test this new twin rig but are sure its more than capable. The Evinrude Twin Rig has pulled 9 person back barefoot lines, 12 person front barefoot lines, double top four highs and 2 four highs off the dock. Booms are available for the Evinrude twin rig and booms for the





new twin rig are being built. The booms have attachments to handle two people on the end of them and can be removed easily.

Both the Ski Jump and the Barefoot Jump are host provided equipment.

Training On The Lakes

As other countries will be aware, Australia does not have a huge amount of show teams to support all of the teams travelling and needing a place to stay. Teams may like to reach out to Victoria, Mulwala or WA as host teams. However due to the vast distances involved, this is probably not feasible.

The Max Kirwan Ski Lakes are two lakes that mirror each other, The Competition Lake meets all show course requirements and the training lake is equipped with a jump and docks. Maps can be sent to team managers on request.

Training on the Non-Competition Lake before official practice begins can be booked at \$200 USD per hour and includes a twin rig and a Malibu and potentially a third on request. Training on the Competition Lake can be booked for \$230USD per hour and includes a twin rig and two Malibu's.

Show Ski Gear

In the last few months we have been coordinating with teams to organise ski gear requests and we will do our best to accommodate them. All requests for equipment will be finalised by Mid January

Major Sponsor

The Mulwala Water Ski Club is the Yarrowonga Mulwala region's premier venue for Live Music, sport, dining or just plain relaxing. Boasting absolute water frontage with stunning views of Lake Mulwala from



our Malibu Deck, our renowned restaurants, bar and coffee lounge are the perfect place to get together for a meal, enjoy a quiet drink, or catch up with friends over a hot cappuccino. And don't forget some fantastic live entertainment, with a range of Australia's hottest acts performing every week - all live and free plus the friendliest staff in town!

Dine with us at the full a-la-carte Golden Inn Restaurant with a reputation for great food Open 7 days for lunch and evening meals. Takeaway also available.





Waterside Pizza, Pasta and Grill has both Italian and Aussie meals available. Tantalising pizza and homemade pasta sauces to satisfy your taste buds. Open all day, 7 days a week. Takeaway also available.

Our Malibu Café is open all day and is located alongside. With freshly made sandwiches, wraps and foccacias plus hot chips, dim sims and more. With daily specials and Coffee, tea and milk shakes available.

Open 7 days a week from 9am. There is something for everyone at the Mulwala Water Ski Club. www.mulwalawaterski.com.au 03 5744 1888

Official Accommodation Options

The host of the 2025 IWWF World Water Ski Show Championships and major sponsor, The Mulwala Waterski Club has its own unique accommodations right on the beautiful Lake Mulwala and just five minutes from the site. The following message comes from the head of the Park, Chris Pern.



Situated in the heart of Yarrawonga-Mulwala right on the water's edge of Lake Mulwala and next door to the Mulwala Water Ski Club. Our holiday park offers accommodation packages to suit everyone. Camping and Caravan sites, Apartments, Cabins and Villas.

Waterfront Apartments

Spoil yourself and stay in one of our luxury 6-berth apartments with absolute water frontage, bathroom, separate toilet, 2 flat screen TV's, Astar, electric blankets (on main bed), cooking facilities, fridge, microwave, reverse cycle air-conditioning, ceiling fans, washing machine, iron and ironing board, barbecue and a large verandah.

Waterfront Villas

Why not relax and enjoy the super views from one of our waterfront villas. Eight berth with bathroom, two colour TV's, Astar, electric blankets (on main beds), cooking facilities, oven fridge, microwave, reverse cycle air conditioning, ceiling fans and a barbecue on the verandah.

Waterfront Cabins

Book your fishing or skiing holiday in one of our waterfront cabins, well located close to marina. Five Berth with bathroom, colour TV, Astar, electric blankets on main bed, cooking facilities, fridge, microwave, reverse cycle air conditioning, ceiling fans and verandah. Be active or simply relax and enjoy.

Budget Cabins

Five or six berth en-suite, colour TV, electric blankets (on main bed), cooking facilities, fridge, reverse cycle air conditioning, ceiling fans.

Powered Sites

Our well-located powered sites have shade and are situated close to amenities which include a camp kitchen, laundry and barbecues to make your stay a pleasure. Perhaps hiring an RV or Camper might be what your after, we have the spot to park it.





Our Other Major Accommodation Partners

The Sebel Yarrowonga, www.thesebelyarrowonga.com.au

Lake Mulwala Holiday Park, 03 5744 105, <https://www.yarrowongaholidaypark.com.au>



Yarrowonga Holiday Park is situated on the beautiful Murray River, just downstream from Yarrowonga Weir - perfectly situated for your holiday!

From our 3 Bedroom Villas, 2 Bedroom Villas (Disabled friendly options), Motel Units, Riverview Cabins, Ensuite Cabins, Standard Cabins, to our Powered Camping Sites, you will find fantastic accommodation to suit your style and budget.

Walking distance to the main street of Yarrowonga and a 5 minute drive or 15 minute walk to the Mulwala Water Ski Club, we are perfectly located for all your needs.

In support of the Waterskiing World Championships we would like to offer all entrants and their families a 10% discount on their stay. We look forward to welcoming you to our beautiful park!





2025 WORLD SKI SHOW CHAMPIONSHIP MULWALA

THE
SEBEL
YARRAWONGA
SILVERWOODS

STAY LAKESIDE AT
THE SEBEL
SILVERWOODS, YARRAWONGA



SCAN TO BOOK

We invite you to stay at The Sebel, Silverwoods Yarrowonga, nestled in one of Victoria's most stunning regional destinations. Our award-winning boutique hotel is perfectly positioned on the shores of Lake Mulwala. Enjoy a luxurious stay, indulge in delicious food and wine, play the championship Black Bull Golf Course, rejuvenate at our SOL Wellness Centre, or unwind at the Sunset Bar beside the infinity pool, taking in breathtaking lake views.

Your perfect base for the ultimate water-skiing experience.



thesebel.yarrowonga.com.au



sebel.yarrowonga



thesebel.yarrowonga





Entry Fees

This year the entry fee for competitors does not include meals which is why it is significantly less than the previous worlds in Mulwala even accounting for the worlds economic inflation period. The good news is that when dinners are purchased online the fee per person will still reflect the total price of the 2020 World Championships.

Individuals - \$60 USD per person
Team Skiers - \$90 USD per person

Entries are due in the new year.

Scheduling of Events

Official Practice	
Sunday 16th	Monday 17th
7:00 Australia	7:00 Belgium
9:30 Belgium	9:30 Doubles Practice
12:00 USA	11:00 USA
14:30 Canada	13:30 Canada
	16:00 Australia
	Tuesday 18th
	7:00 USA
	9:00 Swivel Practice
	11:00 Jump Practice
	13:00 Canada
	15:00 Australia
	17:00 Belgium
Wednesday 19th	Thursday 20th
7:00 Canada	7:00 Australia
9:00 Australia	9:30 Belgium
11:00 Swivel Practice	12:00 USA
12:30 Belgium	14:30 Canada
14:30 USA	

Competition	
Friday 21st	Saturday 22nd
8:30 Swivel	8:30 Team A
11:15 Doubles	10:15 Break
13:30 Jump	10:30 Team B
	12:15 Break
	12:30 Team C
	14:15 Break
	14:30 Team D
	Sunday 23rd
	8:00 Team A
	9:45 Break
	10:00 Team B
	11:45 Break
	12:00 Team C
	13:45 Break
	14:00 Team D





Off Water

- 14th - USA Wings Night - Mulwala Waterski Club
- 15th - Belgium Beer Night - Mulwala Waterski Club
- 16th - Canadian Syrup Night - Mulwala Waterski Club
- 17th - Aussie BBQ Night - Mulwala Waterski Club
- 19th - Judges Clinic - Max Kirwan Ski Park
- 19th - Welcoming Dinner - Mulwala Ski Club
- 20th - Judges Clinic - Max Kirwan Ski Park
- 21st - Ski Show Reunion Night - Mulwala Waterski Club
- 23rd - Presentation Night - Mulwala Golf Club

Dinners and Functions

All the major functions will be held in Mulwala and are walking distance from most accommodation of competitors and officials. Tickets for all functions can be purchased at www.mulwalawaterski.com.au in the new year.

Welcoming dinner is on the Wednesday the 19th at 6pm and will be a good old style Aussie BBQ at the Mulwala Waterski Club Hosted by the local ski team. The venue is right on the scenic Lake Mulwala at the Malibu Deck - an amazing entertainment venue. It is the best place in waterskiing to host a social event where teams can get to know each other and relax before competition begins. The cost of this night is \$35 for Adults and Children under 12 will be \$20. Tickets will be available to purchase online in the new year

Throughout the week there will be many informal nights on the ski club deck featuring music, videos and themed nights with the goal to provide each country a themed night during the week and a half of worlds. These will be great social nights allowing the teams to bond and the spectators/support crews a chance to unwind and have some fun. The cost of this night is \$20 per person with food being included with the the price of entry. Tickets will be available to purchase online in the new year

The Closing Ceremony and presentations will be back at The Mulwala Golf Club on the Sunday night. The venue boasts a 350 seating capacity and world class food all situated on one of the most beautifully pristine golf courses in Australia. Entry to this event for officials is free with competitors and team officials being able to book online. the cost of this night is \$90 per head and tickets will be available to purchase online in the new year

Visa Requirements

Traveling here from will be different for each country and we strongly suggest you check the immigration website below or speak to your travel agent before you leave to come to Australia. In most cases it will be an online application for \$25 AUD but see the website for more pertinent information.

<https://immi.homeaffairs.gov.au/visas/getting-a-visa/visa-listing/electronic-travel-authority-601#About>





Local Transport

Transport to and from Melbourne Airport will be handled by the Local Mulwala team and be coordinated with Team Managers and Judges to make sure every one and every team makes it here safely. We will also handle their return trip to Melbourne as well, teams will be looked after. Melbourne to Mulwala is a 3.5 hour bus ride. Teams will need to coordinate their travel for one pick up and drop of per team and let the LOC know in advance.

Rental Car facilities in Yarrawonga/Mulwala are very small and not recommended for traveling teams or spectators. For this reason we strongly suggest renting a car from the airport if you intend to use one here. Both Tullamarine and Albury provide multiple outlets though locals here find it is best to book in advance.

Because the teams will be within walking distance to most of the towns' facilities, shopping and amenities, they may not wish to hire cars and save the cost. As such we aim to provide a bus service that will make stops around the town and out to the site. Each day a dedicated bus will run a scheduled route passed all team hotels and the club and the site to pick up and drop off teams. We will ensure all teams will have the ability to make training on time. During the week of the worlds we will look to run two busses to make sure all the teams can be at the site when required. For teams and competitor's the Bus is free for Official Training and Competition days. For everyone else and outside of this days it's \$5 AUD per day to ride the bus.

We also suggest each team has at least one car or other means of transport for times when team members miss the bus. We greatly appreciate the support of Coach Tours of Australia and recommend your team gets in contact with us if you wish to organise some sightseeing anywhere in Australia. These guys have many options and will look after you ensuring your stay here is a good one.



Host Federation Information

The host federation for this Championships is Waterski And Wakeboard Australia (WAWA). The Australian Federation is very proud to be involved and is looking forward to welcoming teams down under. Leeza Wray as CEO and Paul Hobbs as President are both active members in the show ski community and are right behind the Championships. To get in contact with WAWA, please use the website <https://www.awwf.com.au/contact-us/> and WAWA will get back to you as soon as possible





Competition Website

All the information about the Championships and a whole lot more can be found at www.mulwalawaterski.com.au

Covid-19 PCR Testing

Currently Australia does not require COVID testing for arrival or departure from the country, though there is a chance that during any medical intervention a PCR test will be performed. As this information will be out of date by the time of the Championships arrives it is strongly advised that traveling parties check in with Australia’s “Smart Traveler” website at www.smartraveller.gov.au

IWWF Safe Sport Policy and IWWF Safeguarding Regulations

We take safeguarding extremely seriously and are committed to ensuring that everyone who attends the championships, whether athletes, officials or volunteers are able to operate in a safe environment, free from abuse and the risk of harm.

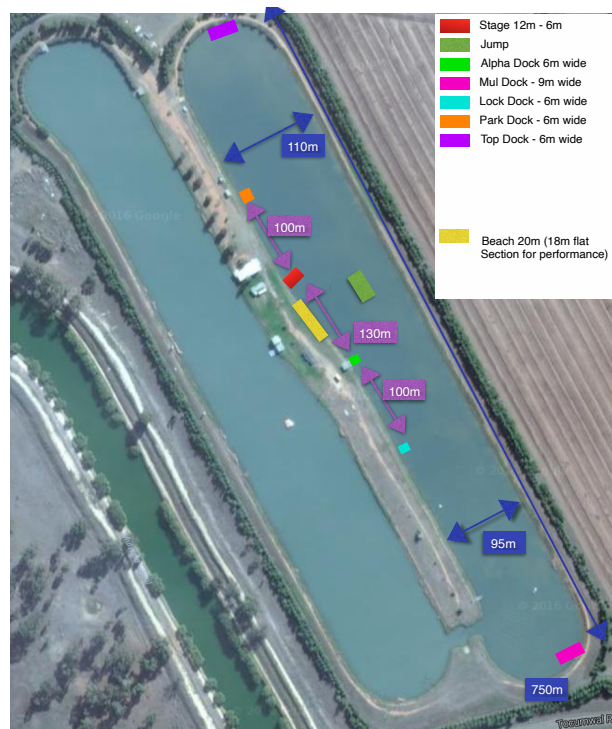
It is a condition of participation that all attendees familiarise themselves and comply with the IWWF Safeguarding Regulations which are available at <https://iwwf.sport/safe-sport-information/>

Doping Control

In accordance with the IWWF Anti-Doping Rules, Doping controls will be conducted during the competition. By entering this competition, all athletes agree to be subject to doping control. Information about the IWWF Anti-Doping program, the current IWWF AD Rules and links to the list of banned substances can be accessed on the following link <https://iwwf.sport/anti-doping-information/>

The Show Course

The show course now has a big stage new stage that meets the worlds rules and its a beauty to. We have containers set up for the teams to use and there is a heap of stalls off the water to check out. The grandstands give you a full view of the show course and it will be an excellent venue to watch the worlds



Note. Main stage, Alpha dock and Mul Dock are set, the Lock Dock, Park Dock and Top dock may move within 20 meters of their current set up depending on morings, their size mate also change somewhat





Officials

A huge thank you to this amazing list of people and the work they will be doing, Mulwala welcomes you and we are super grateful for you coming out

CHIEF JUDGE

Jeff Henke USA

SCORING JUDGES

Debbie Farra - USA

Ellen Sachs - USA

Joel Johanninger - USA

Sabine Declercq - BE

Susie Roherty - USA

Polly Nemec - USA

Sandi Oleson - USA

SECRETARY

Leonie Weston-Green - AUS

Simone Britt - AUS

Colleen Horton - AUS

Hugh Levesque - AUS

Karen Hogan - AUS

Jutta Richarz - DE

Dot Hicks - AUS

CHIEF SCORER

Jane Henke - USA

ASSISTANT SCORER

Olivier de Ram - BE

CHIEF SAFETY

Kurtis McMillan - USA

SAFETY

Steve Slatter - USA

TIMER/STAGING

Garry Wilson - AUS

TOURNAMENT DIRECTOR

Kelvin Weston-Green AUS

Currency Exchange Advice

The best place to exchange Money in Australia is in our Capital City or organise this exchange before you arrive. Mulwala Does not have a place to exchange cash with the closest facility to do so in Albury, 1 hour away. Most ATM's in Australia will accept Eftpos, Visa and Mastercards as will most if not all of the shops in town. Please note that AMEX is not widely accepted especially in smaller stores

Departure tax details

Australia has a Passenger Movement Charge (PMC) as our version of departure tax. This was collected when you purchased your ticket and as such you will not be expected to pay anything when leaving the airport

LOC Contact Information

The Local Team in Mulwala is the Mulwala Waterski Show Team, the team has hosted two National Championships and have won the last 3 National Championships. You may know Brutis Ryan and Peter O'Neill who lead the Show Team but as the team has grown, so has the volunteer base; with 100 active members the team are ready, willing and able to take on the 2025 IWWF World Water Ski Show Championships We believe we





are more than capable of running an excellent Event and one you will love. Pete O'Neill and Kelvin Weston-green will be heading up the LOC with help from all members of the Mulwala Waterski Show team as well as the Australian show ski community.

Pete O'Neill	skiproshop@me.com	+61407242656
Brutis Ryan	brutis4kathy@westnet.com.au	+61429982081
Kelvin Weston-green	kelonie@mail.com	+61427268241

Mailing Address

PO BOX 154
 Mulwala 2647
 NSW

Now to put this into Australian Terms -

Bloody gunna be great mate. Snags are cooking and the beers are cold -may as well stay for a ski!

